

# Facilities and Staff



## EQUINE BREEDING FACILITIES AT TOWNHEAD FARM:

- 20 acres of fenced paddocks
- Seven stables with CCTV (including two large mare and foal boxes)
- Stocks for ultrasound examination
- Liquid nitrogen semen storage tanks
- Secure double gated yard

## EQUINE VETS:



Paul May



Euan Hammersley



Freya Wood

## EQUINE SUPPORT:



Kelly Smith



Sian Edwards



Hayley Gray



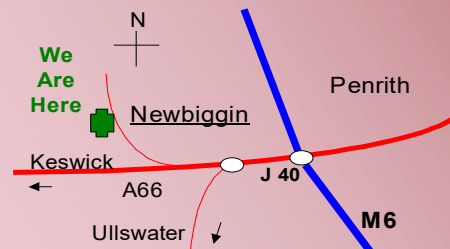
Mel Gray

# Terms and Conditions



- **SEMEN AND SEMEN DELIVERY CHARGES** are to be arranged with and paid to the stud or semen supplier directly. They are also responsible for issuing you with a covering certificate. We will report results and liaise with them to ensure you receive your covering certificate.
- **Please note we can only inseminate your mare if the correct paperwork accompanies the semen. You need to ensure this is correct with your semen provider.**
- **Non-registered clients will be required to pay a deposit on the mares arrival, this will be deducted from the final invoice. Full payment must be made when the mare is collected.**
- **Please also note that if you use chilled semen it will have limited delivery days, for example not Sundays or Bank Holidays. We are currently unsure as to how Brexit will affect the next day delivery of chilled European semen, please discuss with the team if this may affect your mare.**

## HOW TO FIND US:



## Paragon Veterinary Group

Townhead Farm, Newbiggin,  
Penrith, Cumbria, CA11 0HT

Tel: (017684) 83789

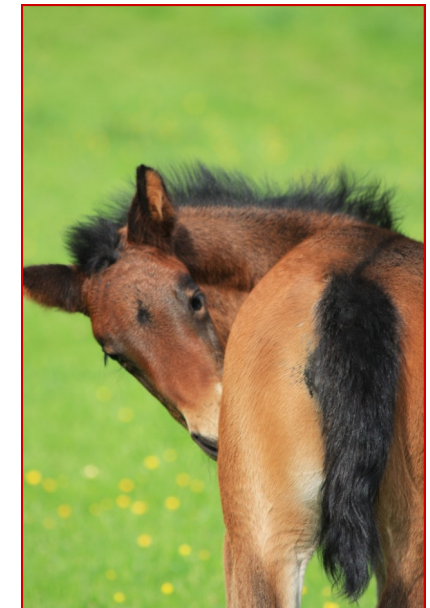
Email: [equine@paragonvet.com](mailto:equine@paragonvet.com)

[www.paragonvet.com](http://www.paragonvet.com)

Paragon Vet Ltd Registered in England. No 4464469



# EQUINE BREEDING 2021





## Pre-breeding Assessments



At Paragon we can carry out a reproductive and fertility assessment of your mare before she is taken to stud. The aim of the assessment is to highlight any fertility problems and to make sure that your mare is in tip top condition for breeding before you make the journey to stud. Any problems highlighted during the assessment can be treated or investigated further.

CEM swabs and blood tests for EVA can be done at this stage so that you are not waiting for results when your mare should be getting covered by the Stallion.

### THE REPRODUCTIVE AND FERTILITY ASSESSMENT INCLUDES:

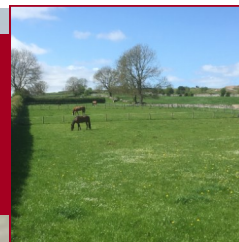
- Assessment of physical condition
- Speculum examination of internal confirmation
- Rectal ultrasound scan of uterus and ovaries

Reproductive and Fertility Assessment      £56.00

CEM swabs and EVA blood samples will be charged separately.



## Equine AI Package

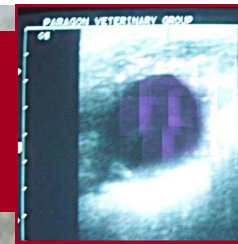


We have been a British Equine Veterinary Association (BEVA) approved Equine Artificial Insemination (AI) Centre for over 10 years. Our experienced equine team will endeavour to take exceptional care of your Mare or Mare and Foal throughout their stay at Paragon.

### THE AI PACKAGE INCLUDES:

- Reproductive and fertility assessment (1st cycle).
- Clitoral Contagious Equine Metritis (CEM) swab and lab fees (1st cycle).
- Up to 1 weeks grass livery (1st and 2nd Cycle).
- Reproductive scanning to pin point the optimum time for insemination.
- Insemination with a Vet and Nurse.
- Frozen semen storage and handling.
- Ovulation induction injections to assist with timing of ovulation/ insemination.
- Oxytocin and post-insemination wash outs
- Pregnancy diagnosis scan at 14 and 28 days post ovulation.
- Twin reduction up to 16 days post insemination
- Night time checks by qualified staff
- Regular phone calls to keep you informed on your mares progress

## Equine AI Package



### NOT INCLUDED IN THE AI PACKAGE:

- Sedatives and muscle relaxants
- Twin reduction after 16 days
- Treatment and investigation of fertility
- Regumate treatment
- Caslicks sutures
- Visits for PD scans done at home
- Horse feed (you can also bring your own)
- Livery if staying with us for more than a week

The all inclusive package for Equine AI with chilled or frozen semen:

1st cycle	£325.00
2nd cycle	£286.00
Each additional cycle	£131.00

Grass Livery Mare, per day	£6.20
Grass Livery Mare and Foal, per day	£7.50
Half Livery - stabled at night, per day	£11.50

*(all prices subject to 20% VAT)*

### WHEN TO BRING YOUR MARE:

Mares with foals at foot are best presented for their initial reproductive examination towards the end of the foal heat. Maiden and barren mares are best examined just prior to or at the beginning of their season.

Mares should be in lean or good body condition but not overweight and in good general health. Vaccinations, dentistry, worming and foot care should be up-to-date.

017684 83789

[www.paragonvet.com](http://www.paragonvet.com)

